



INSTRUCTIONS

REMOTE ENCODER

RC-28

Thank you for choosing the RC-28 REMOTE ENCODER. Connect the RC-28 to a PC USB port, and operate the RS-BA1 IP REMOTE CONTROL SOFTWARE on the PC.

READ ALL INSTRUCTIONS carefully and completely before using the RC-28.

PRECAUTIONS

⚠ **WARNING! NEVER** disassemble the RC-28. Incorrect reassembly may result in a fire hazard or electric shock.

⚠ **WARNING! NEVER** operate or touch the controller with wet hands. This may result in an electric shock or damage the controller.

⚠ **WARNING! NEVER** let metal, wire or other objects protrude into the controller. This may result in an electric shock.

CAUTION: DO NOT expose the controller to rain, snow or any liquids.

CAUTION: DO NOT strike or otherwise impact the controller. This may damage the controller.

KEEP the controller out of reach of unauthorized persons.

DO NOT use harsh solvents such as Benzene or alcohol to clean the controller, because as they will damage the controller's surfaces.

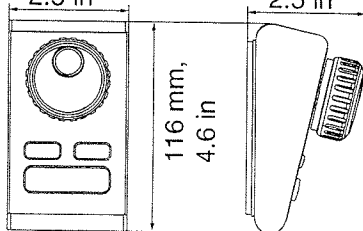
DO NOT connect the controller to other than a PC. Otherwise it will not work properly.

SUPPLIED ITEMS

Items	Qty.
USB cable (approximately 1.5 m, 4.9 ft).....	1
Instructions (this leaflet).....	1

SPECIFICATIONS

- Input voltage: DC 5 V \pm 5% (supplied through the PC's USB port)
- Operating temperature range: $-10^{\circ}\text{C} \sim +60^{\circ}\text{C}$, $+14^{\circ}\text{F} \sim +140^{\circ}\text{F}$
- Weight: (approximately) 440 g, 15.5 oz (supplied USB cable is not included)
- Dimensions: (approximately) 64 mm, 2.5 in (width), 116 mm, 4.6 in (height), 64 mm, 2.5 in (depth)



All stated specifications are subject to change without notice

FCC INFORMATION

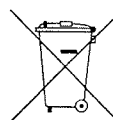
• FOR CLASS B UNINTENTIONAL RADIATORS:

This equipment has been tested and found to comply with the limits for a Class B digital device, pursuant to part 15 of the FCC Rules. These limits are designed to provide reasonable protection against harmful interference in a residential installation. This equipment generates, uses, and can radiate radio frequency energy and, if not installed and used in accordance with the instructions, may cause harmful interference to radio communications. However, there is no guarantee that interference will not occur in a particular installation. If this equipment does cause harmful interference to radio or television reception, which can be determined by turning the equipment off and on, the user is encouraged to try to correct the interference by one or more of the following measures:

- Reorient or relocate the receiving antenna.
- Increase the separation between the equipment and receiver.
- Connect the equipment into an outlet on a circuit different from that to which the receiver is connected.
- Consult the dealer or an experienced radio/TV technician for help.

CAUTION: Changes or modifications to this controller, not expressly approved by Icom Inc., could void your authority to operate this controller under FCC regulations.

DISPOSAL



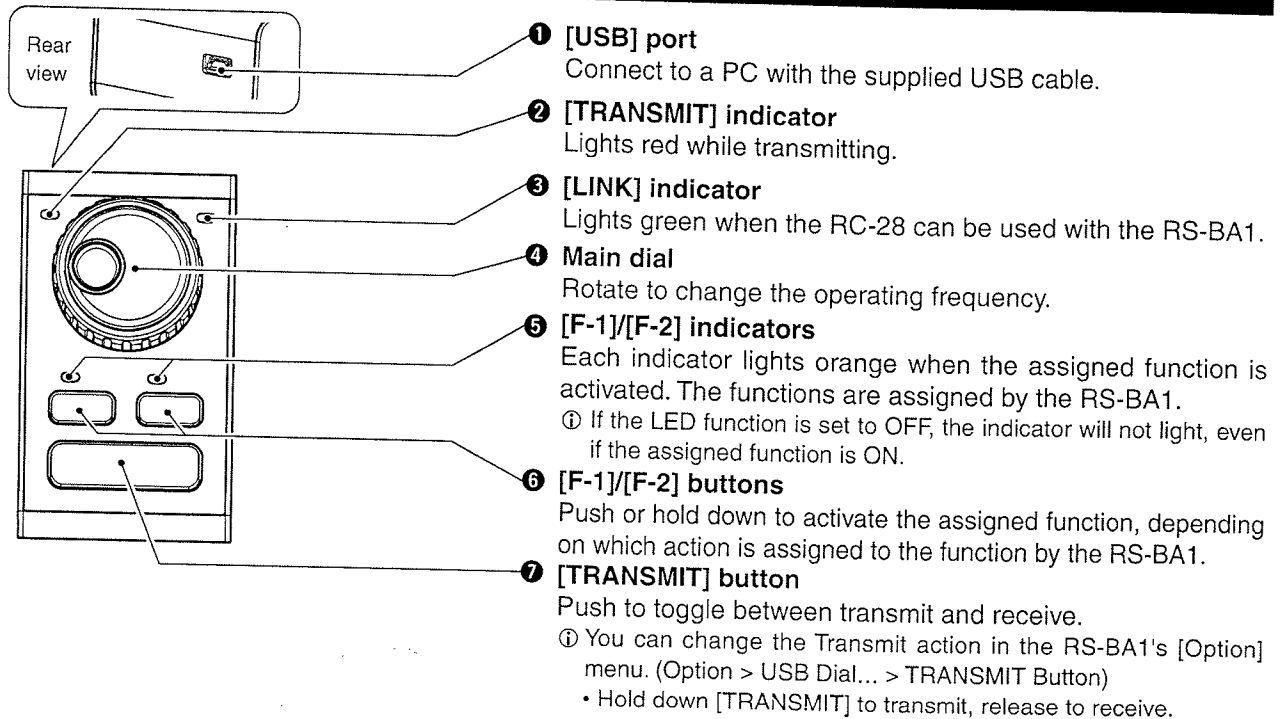
The crossed-out wheeled-bin symbol on your product, literature, or packaging reminds you that in the European Union, all electrical and electronic products, batteries, and accumulators (rechargeable batteries) must be taken to designated collection locations at the end of their working life. Do not dispose of these products as unsorted municipal waste. Dispose of them according to the laws in your area.

ABOUT CE



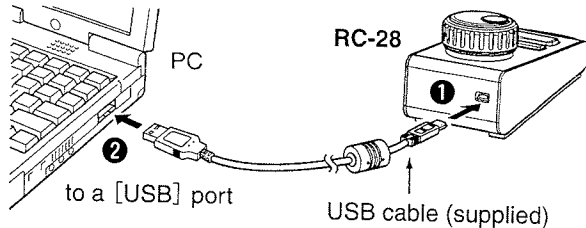
The RC-28 complies with the essential requirements of the 2014/30/EU directive for Electromagnetic Compatibility and the 2001/95/EC directive for General Product Safety.

PANEL DESCRIPTION



TO USE RC-28

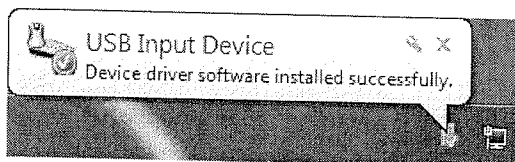
- ① Make sure Windows has completed its start-up.
- ② Connect the RC-28 to the PC that the RS-BA1 1.30 or later version is installed.



- **DO NOT** connect the RC-28 to the PC with other than the supplied USB cable or through any USB hub. The RC-28 may not work properly.
- The RC-28 cannot be used with RS-BA1 1.20 or earlier versions. Please download the latest version from the Icom website, and update your RS-BA1.

<http://www.icom.co.jp/world/index.html>

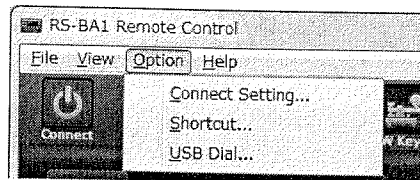
- ① When you connect the RC-28 to the PC for the first time, wait until "Device driver software installed successfully." is displayed.



- ③ Start up the RS-BA1 Remote control software.
 - The [LINK] indicator on the RC-28 lights green. (See 'PANEL DESCRIPTION' ③.)
- ④ Now you can control the assigned functions of the RS-BA1 using the RC-28.

- If the [LINK] indicator does not light, check the following.

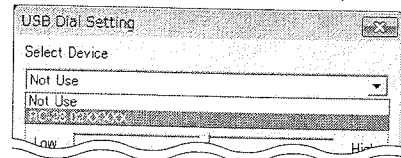
- ① Click the [Option] menu on the RS-BA1's Top menu, and then click "USB Dial..." to open the USB Dial Setting screen.



If the "USB dial..." item on the [Option] menu is not displayed, download the latest software from the Icom website, and install it.

<http://www.icom.co.jp/world/index.html>

- ② If the "Select Device" item is set to "Not Use," set it to the RC-28's serial number.
(example: RC-28 02XXXXX)



Icom is not responsible for the destruction, damage to, or performance of any Icom or non-Icom equipment, if the malfunction is because of:

- Force majeure, including, but not limited to, fires, earthquakes, storms, floods, lightning, or other natural disasters, disturbances, riots, war, or radioactive contamination.
- The use of Icom transceivers with any equipment that is not manufactured or approved by Icom.

Icom, Icom Inc. and the Icom logo are registered trademarks of Icom Incorporated (Japan) in Japan, the United States, United Kingdom, Germany, France, Spain, Russia, Australia, New Zealand, and/or other countries.