

MFJ Microphone Control Center

INTRODUCTION

Thank you for purchasing the MFJ Microphone Control Center. It allows you to mix and match Microphones and Radios. Switching Microphones and Radios has never been so fast and easy.

Movable jumpers that transfer the Mic Audio, PTT, Power and the Ground functions allow you to make most 8-pin Microphones compatible with most 8-pin Radios.

WHAT IS INCLUDED

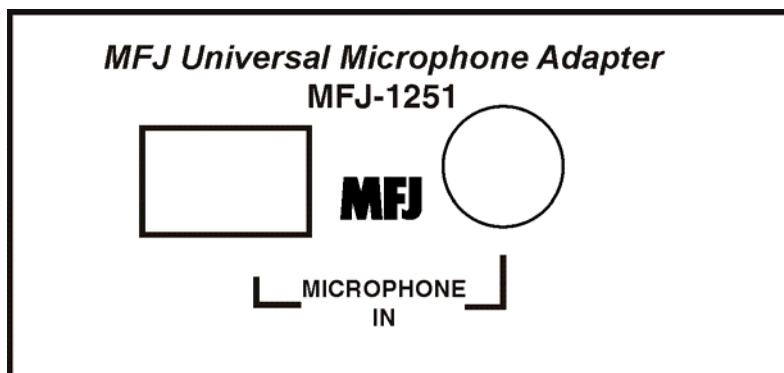
Before rushing into getting the product connected up and ready to use, please take the time to check the contents of the package to ensure that everything is in the box.

The cables that are sent with this unit should cover most Microphone to Radio setups. Use the **MFJ-5397MX** for the Modular Style Radios and **MFJ-5398** for the 8 Pin Round Style Radios.

CAUTION: READ THESE INSTRUCTIONS THOROUGHLY PRIOR TO ATTEMPTING TO HOOK UP YOUR MFJ-1251 TO YOUR MICROPHONE AND RADIO. SEVERAL CAUTIONS ARE GIVEN AND SHOULD BE FOLLOWED SO NO DAMAGE WILL OCCUR TO YOUR RADIO OR MICROPHONE.

FRONT PANEL CONNECTIONS AND CONTROLS:

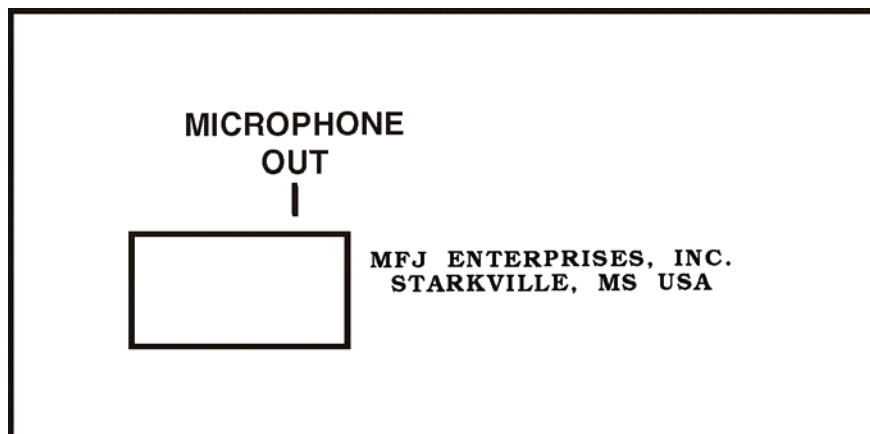
Here is a small picture of the front panel of the MFJ-1251 showing the connectors. We have also included a short explanation of the connectors.



MICROPHONE IN: This is where you plug either the 8 Pin Round Microphone Connector or your RJ-45 Modular Microphone Connector.

REAR PANEL CONNECTORS:

Here is a small picture of the rear panel of the MFJ-1251 showing the connector.



MICROPHONE OUT: This is where the **MFJ-5397MX** for the Modular Style Radios or **MFJ-5398** for the 8-Pin Round Style Radios is connected.

MICROPHONE AND RADIO CONNECTIONS

Different manufacturers for the different radios available may wire the same style connectors differently. The Microphone Control Center has internal headers that use small movable jumpers to enable you to work around this problem. For microphone input connections, the Microphone Control Center uses a common round 8-pin microphone jack as found on most transceivers as well as an 8-pin modular jack which many transceivers now use. Internal jumpers are used to program connections for most radio that connects to the pre-wired connectors. This feature eliminates the need for soldering plugs or jacks and buying adapter cables.

NOTE: *Some microphones and radios will not match up due to differences of microphone functions. If the microphone pin-outs and functions do not match the radio that is to be used, be CAREFUL when making the jumpers. Most radios have DC voltage on the microphone jacks. This voltage is used in the microphone for various functions. Remember that all microphones have a GROUND connection. Be CAREFUL not to accidentally jumper the DC voltage to GROUND, this could damage the radio and/or microphone. Make sure that all microphone pin-outs and functions match before deciding to use the microphone.*

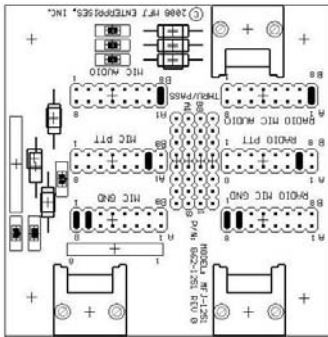
The microphone/radio setup procedure requires a few minutes of your time. Taking the few minutes needed to set the internal jumpers correctly, will save you time in troubleshooting later on. Before you start, you will need the manual for your radio and microphone for reference.

The following pages show the various connections possible with the MFJ-1251. First select the page for the Brand and style of microphone you are using and the on that page locate the style radio you will be using.

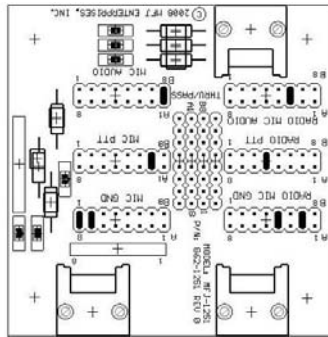
Additionally if the microphone you are using requires a separate DC voltage that is to be provided from the radio you will need to locate the proper cross connection from the tables at the end of this section.

NOTE: *The following diagrams are shown with the FRONT of the MFJ-1251 facing you. Ensure correct orientation prior to placing the jumpers.*

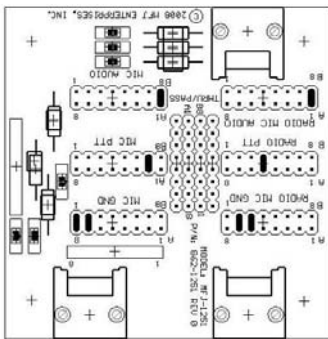
Alinco Modular Microphone Connector



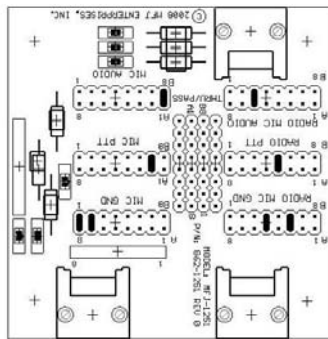
Alinco 8 Pin Round Radio



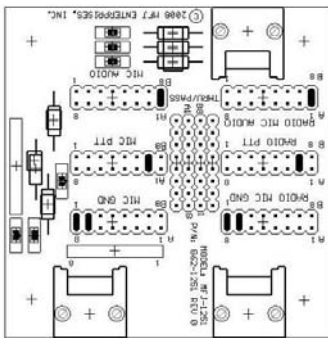
Icom Modular Radio



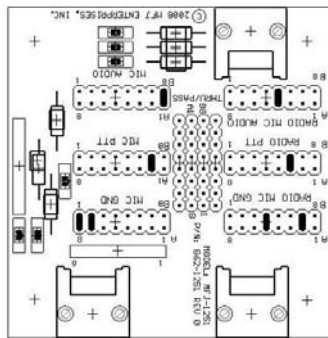
Icom 8 Pin Round Radio



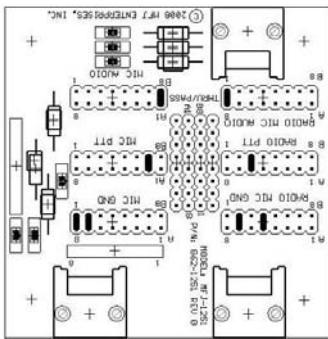
Kenwood Modular Radio



Kenwood 8 Pin Round Radio

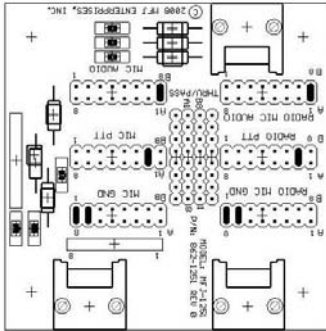


Yaesu Modular Radio

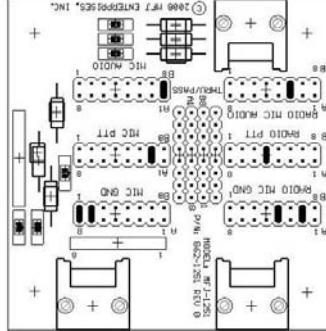


Yaesu 8 Pin Round Radio

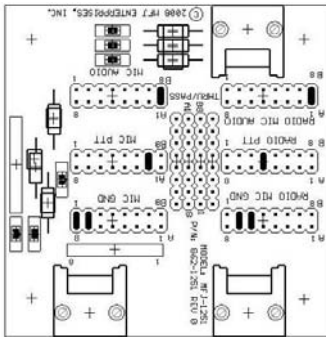
Alinco 8 Pin Round Microphone Connector



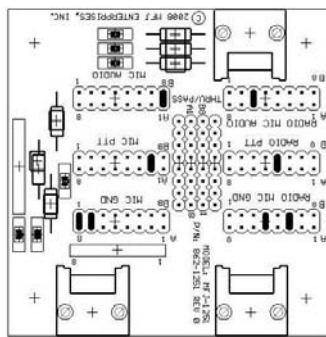
Alinco Modular Radio



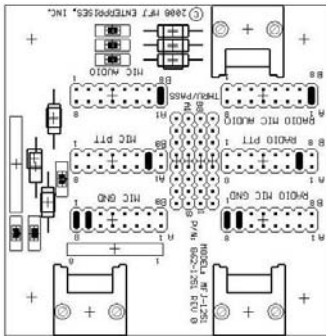
Icom Modular Radio



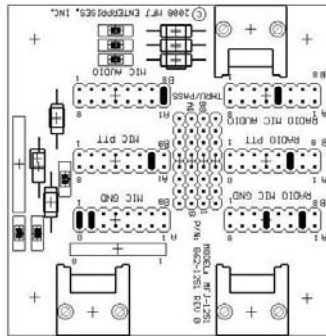
Icom 8 Pin Round Radio



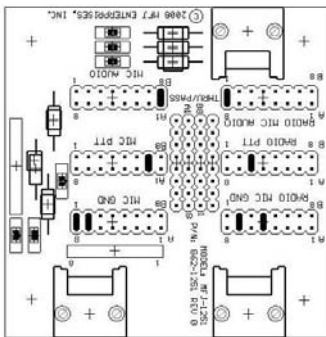
Kenwood Modular Radio



Kenwood 8 Pin Round Radio

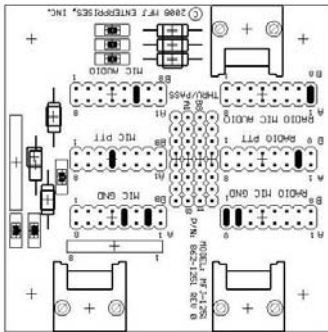


Yaesu Modular Radio

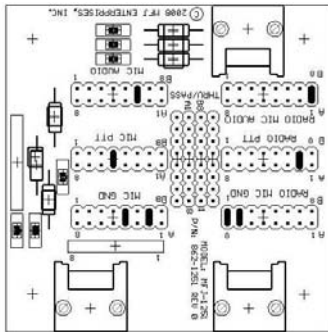


Yaesu 8 Pin Round Radio

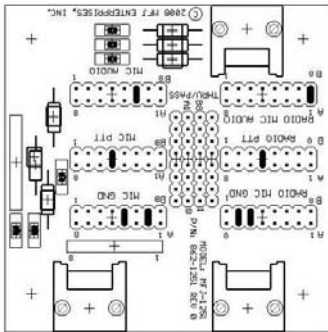
Icom Modular Microphone Connector



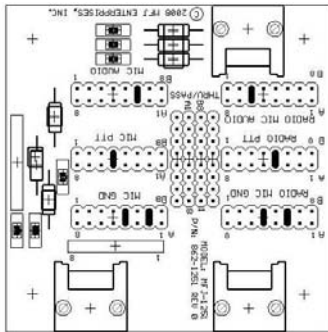
Alinco Modular Radio



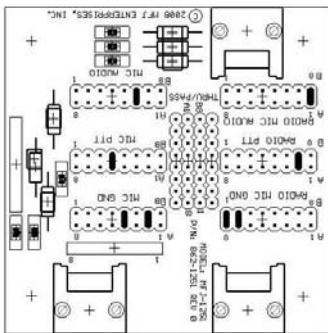
Alinco 8 Pin Round Radio



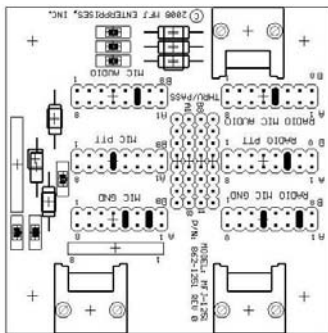
Icom 8 pin Round Radio



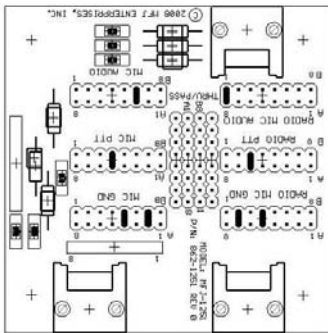
Kenwood Modular Radio



Kenwood 8 Pin Round Radio



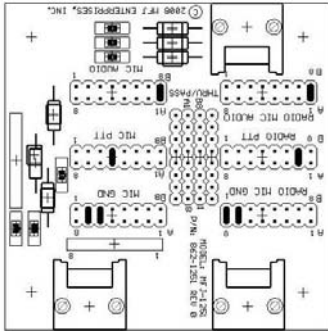
Yaesu Modular Radio



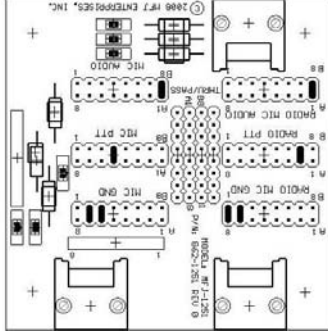
Yaesu 8 Pin Round Radio

NOTE: Alinco and Yaesu radios only provide +5V for the phantom voltage. This can cause reduced output level in Icom and Kenwood microphones that require +8V for the phantom voltage.

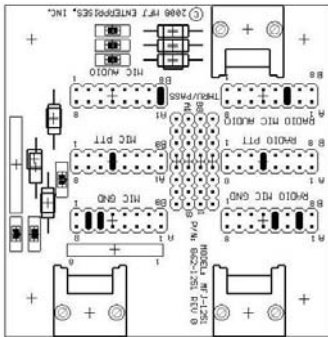
Icom 8 Pin Round Microphone Connector



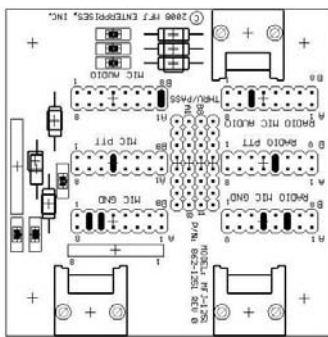
Alinco Modular Radio



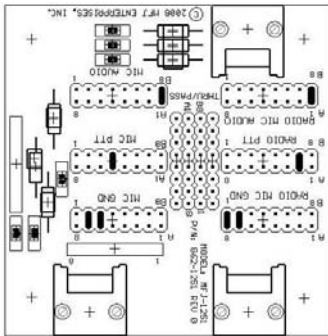
Alinco 8 Pin Round Radio



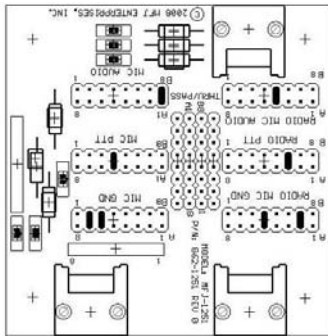
Icom Modular Radio



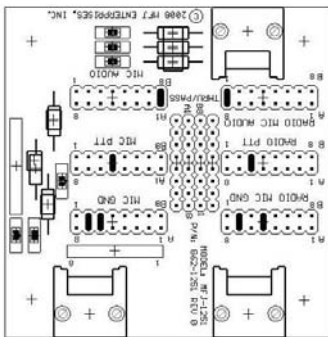
Kenwood Modular Radio



Kenwood 8 Pin Round Radio



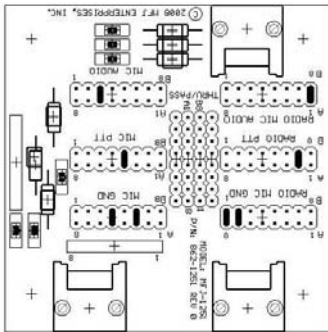
Yaesu Modular Radio



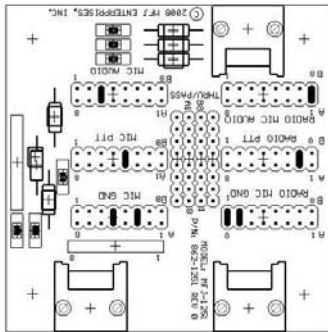
Yaesu 8 Pin Round Radio

NOTE: Alinco and Yaesu radios only provide +5V for the phantom voltage. This can cause reduced output level in Icom and Kenwood microphones that require +8V for the phantom voltage.

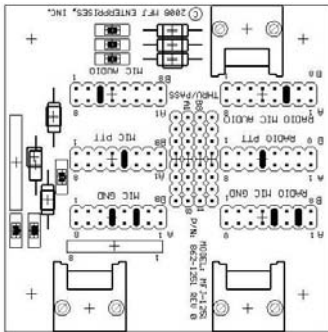
Kenwood Modular Microphone



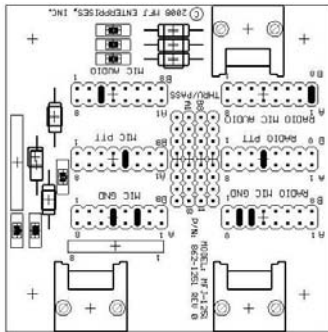
Alinco Modular Radio



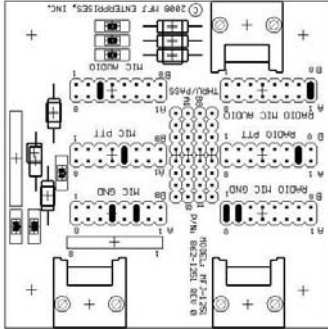
Alinco 8 Pin Round Radio



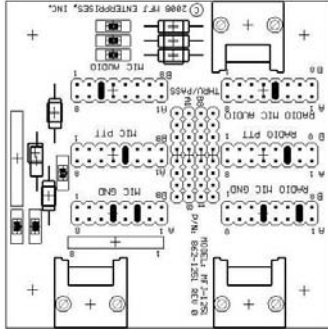
Icom Modular Radio



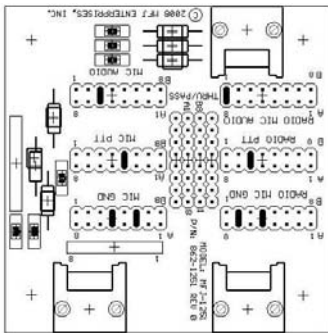
Icom 8 Pin Round Radio



Kenwood 8 Pin Round Radio



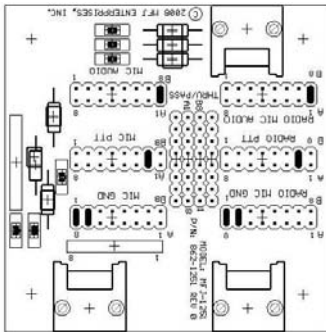
Yaesu Modular Radio



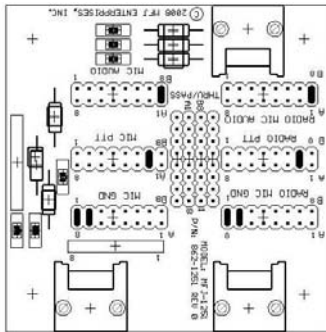
Yaesu 8 Pin Round Radio

NOTE: Alinco and Yaesu radios only provide +5V for the phantom voltage. This can cause reduced output level in Icom and Kenwood microphones that require +8V for the phantom voltage.

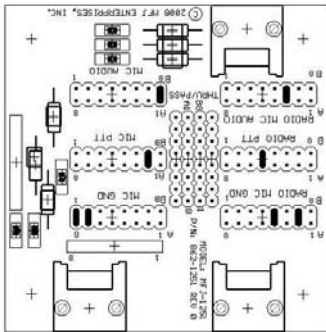
Kenwood 8 Pin Round Microphone Connector



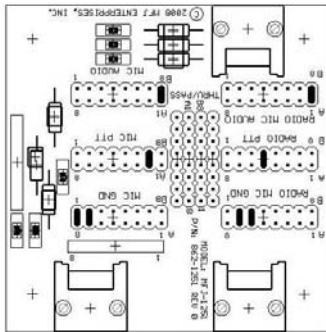
Alinco Modular Radio



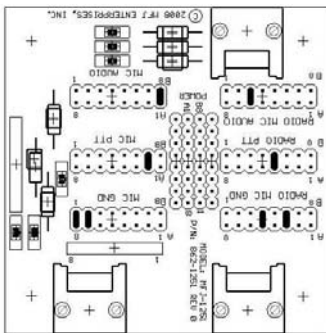
Alinco 8 Pin Round Radio



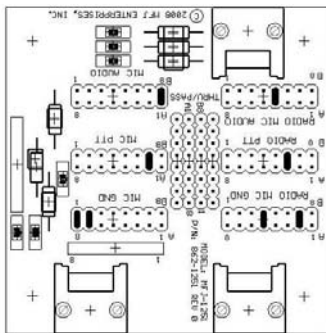
Icom Modular Radio



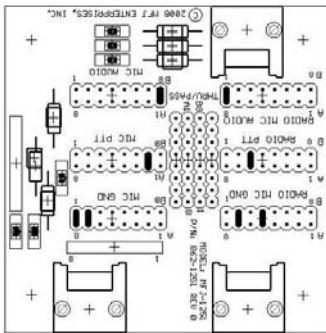
Icom 8 Pin Round Radio



Kenwood Modular Radio



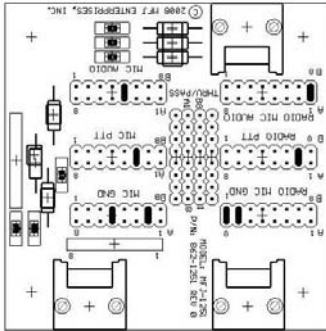
Yaesu Modular Radio



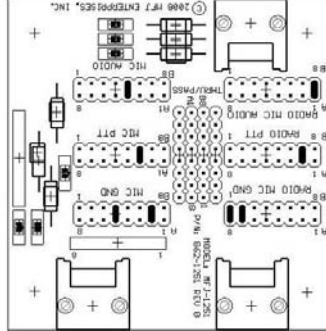
Yaesu 8 Pin Round Radio

NOTE: Alinco and Yaesu radios only provide +5V for the phantom voltage. This can cause reduced output level in Icom and Kenwood microphones that require +8V for the phantom voltage.

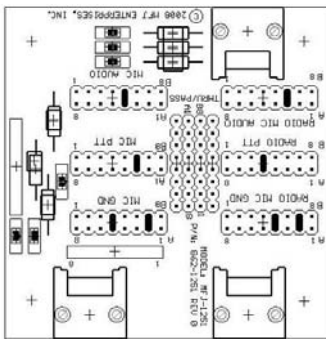
Yaesu Modular Microphone Connector



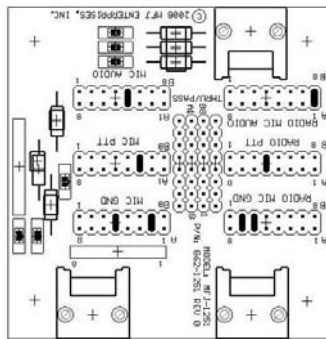
Alinco Modular Radio



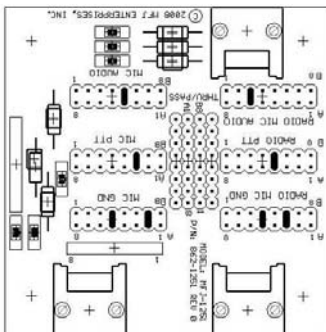
Alinco 8 Pin Round Radio



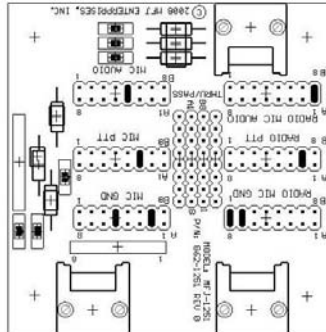
Icom Modular Radio



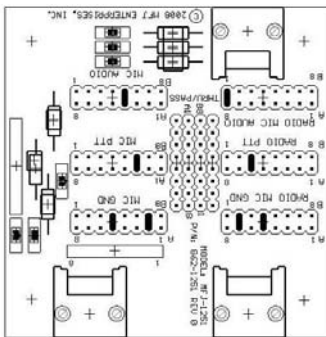
Icom 8 Pin Round Radio



Kenwood Modular Radio

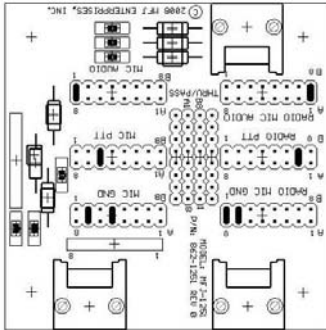


Kenwood 8 Pin Round Radio

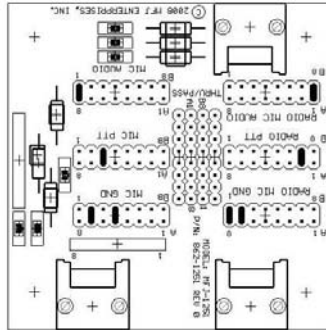


Yaesu 8 Pin Round Radio

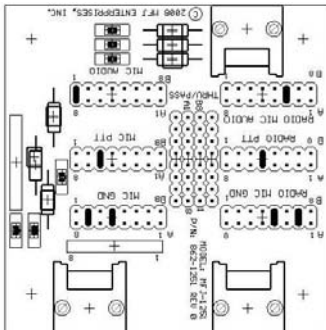
Yaesu 8 Pin Round Microphone Connector



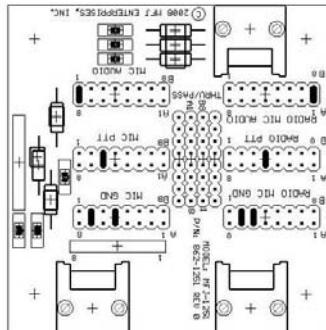
Alinco Modular Radio



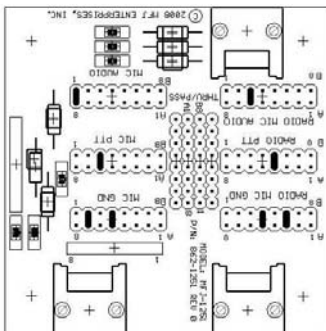
Alinco 8 Pin Round Radio



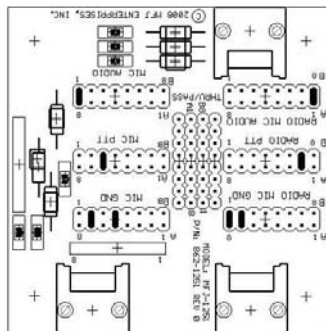
Icom Modular Radio



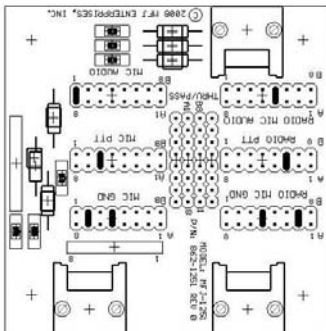
Icom 8 Pin Round Radio



Kenwood Modular Radio



Kenwood 8 Pin Round Radio

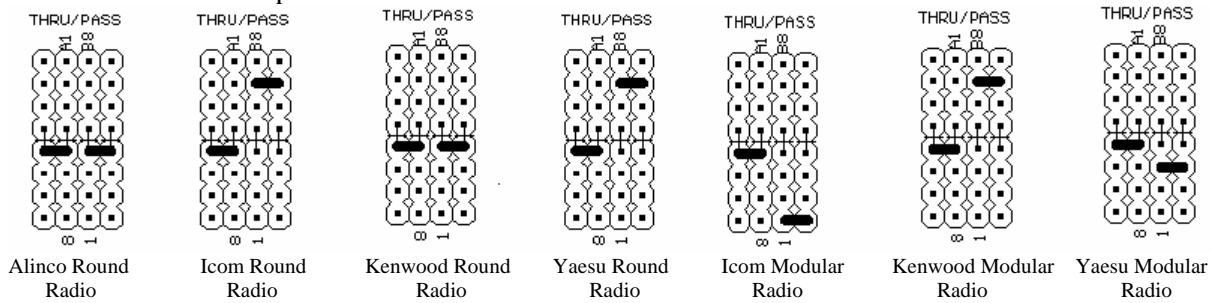


Yaesu Modular Radio

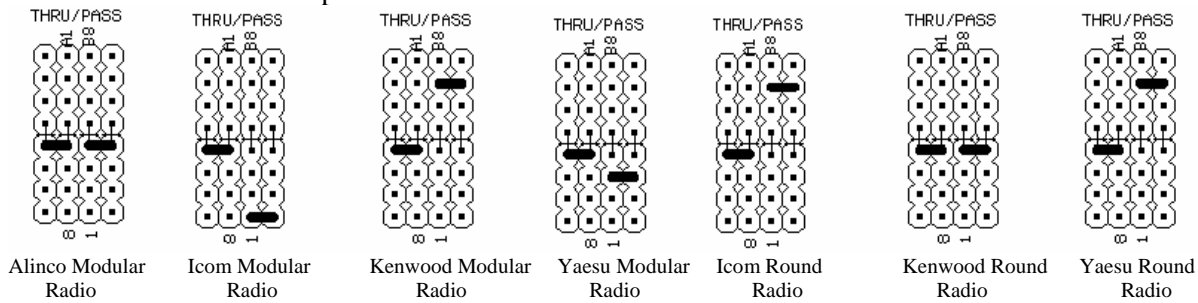
CAUTION: Alinco Microphones call for +5 VDC on the microphone, while Icom radios supply +8 VDC to the microphone. Extreme caution should be used if attempting power the Alinco microphone from an Icom radio as damage to the Radio and/or Microphone could result.

CAUTION: Alinco Microphones call for +5 VDC on the microphone, while Kenwood radios supply +8 VDC to the microphone. Extreme caution should be used if attempting power the Alinco microphone from a Kenwood radio as damage to the Radio and/or Microphone could result.

Alinco Modular Microphone

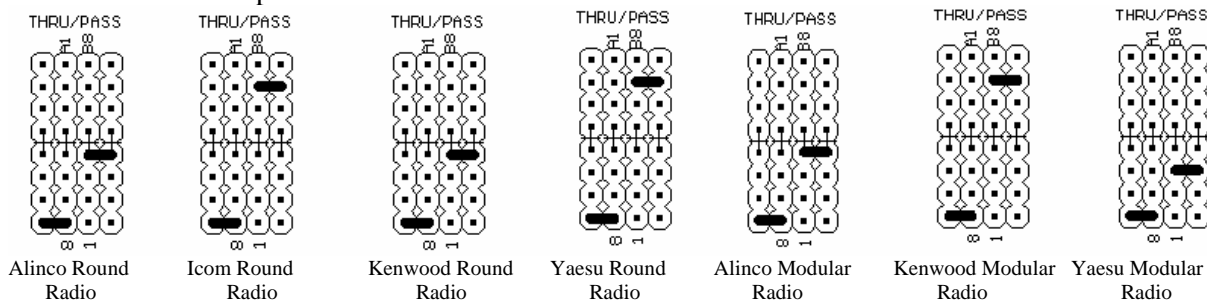


Alinco 8 Pin Round Microphone

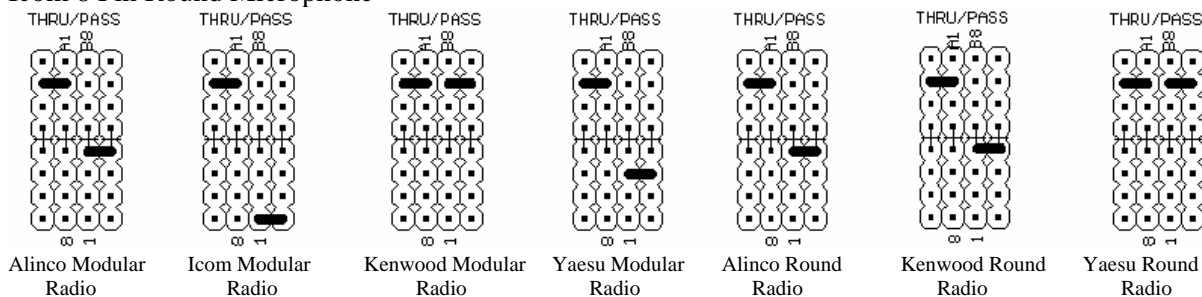


NOTE: Alinco and Yaesu radios supply +5V to the microphone while Icom microphones require +8V to function properly. Some functions such as DTMF may not properly work on the Icom microphone.

Icom Modular Microphone

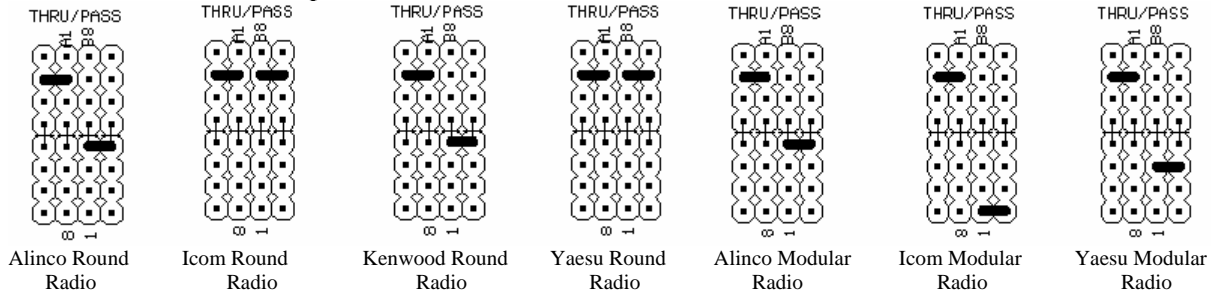


Icom 8 Pin Round Microphone

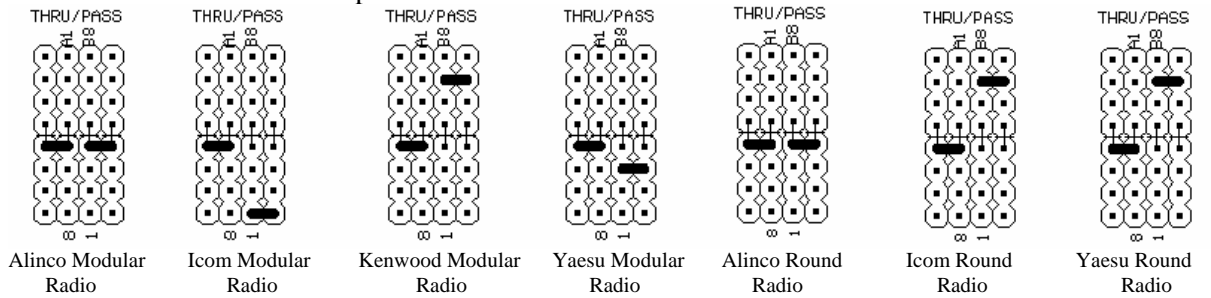


NOTE: Alinco and Yaesu radios supply +5V to the microphone while Icom microphones require +8V to function properly. Some functions such as DTMF may not properly work on the Kenwood microphone.

Kenwood Modular Microphone



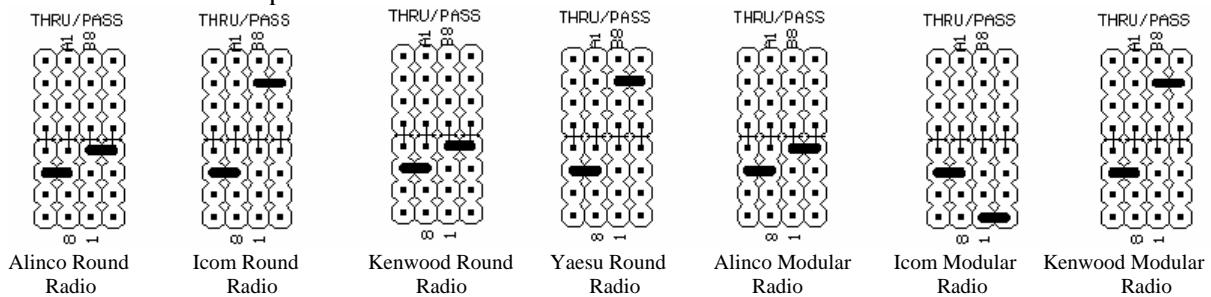
Kenwood 8 Pin Round Microphone



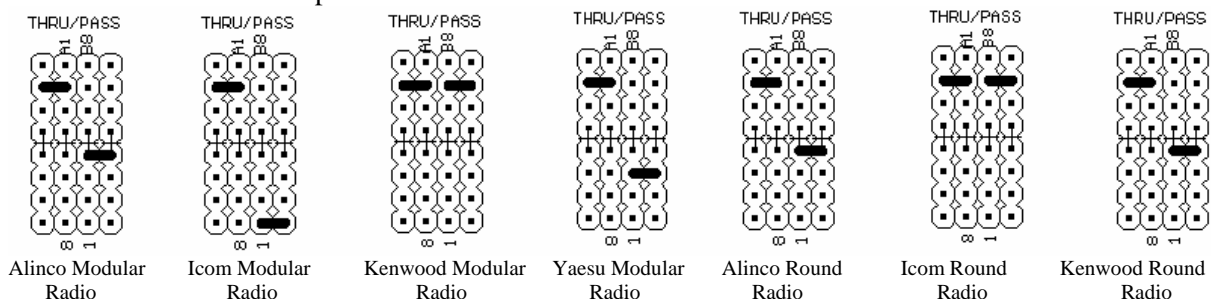
CAUTION: Yaesu microphones call for +5 VDC on the microphone, while Icom radios supply +8 VDC to the microphone. Extreme caution should be used if attempting power the Yaesu microphone from an Icom radio as damage to the Radio and/or Microphone could result.

CAUTION: Yaesu microphones call for +5 VDC on the microphone, while Kenwood radios supply +8 VDC to the microphone. Extreme caution should be used if attempting power the Yaesu microphone from a Kenwood radio as damage to the Radio and/or Microphone could result.

Yaesu Modular Microphone



Yaesu 8 Pin Round Microphone

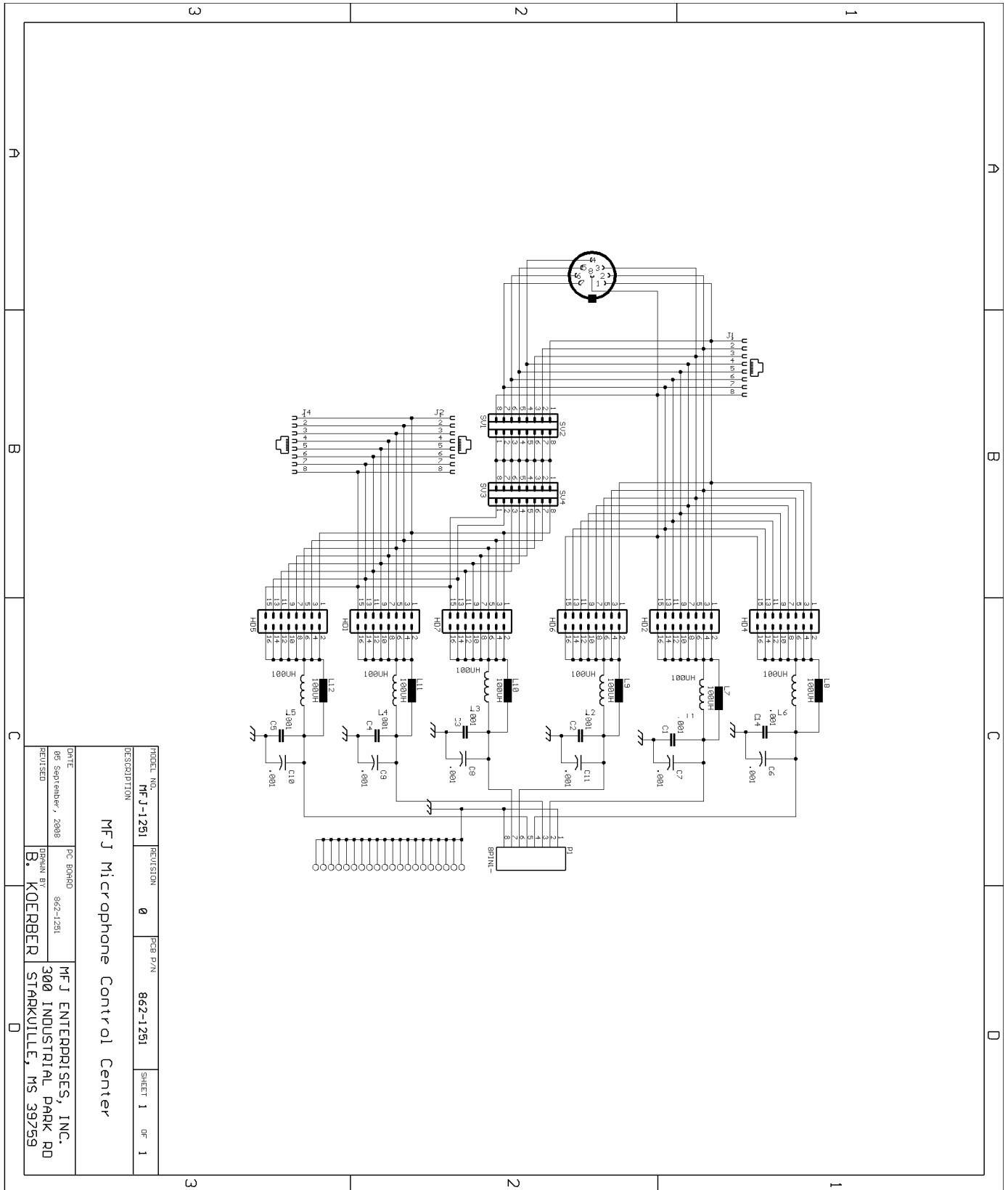


TECHNICAL ASSISTANCE

If you have any problem with this unit first check the appropriate section of this manual. If this manual does not reference your problem or your problem is not solved by reading this manual, you may call *MFJ Technical Service* at **662-323-0549** or the *MFJ Factory* at **662-323-5869**. You will be best helped if you have your unit, manual and all information on your station handy so you can answer any questions the technicians may ask.

You can also send questions by mail to MFJ Enterprises, Inc., 300 Industrial Park Road, Starkville, MS 39759; by Facsimile (FAX) to 662-323-6551; or by email to techinfo@mfjenterprises.com. Send a complete description of your problem, an explanation of exactly how you are using your unit, and a complete description of your station.

SCHEMATIC



FULL 12-MONTH WARRANTY

MFJ Enterprises, Inc. warrants to the original owner of this product, if manufactured by MFJ Enterprises, Inc. and purchased from an authorized dealer or directly from MFJ Enterprises, Inc. to be free from defects in material and workmanship for a period of 12 months from date of purchase provided the following terms of this warranty are satisfied.

1. The purchaser must retain the dated proof-of-purchase (bill of sale, canceled check, credit card or money order receipt, etc.) describing the product to establish the validity of the warranty claim and submit the original or machine reproduction of such proof of purchase to MFJ Enterprises, Inc. at the time of warranty service. MFJ Enterprises, Inc. shall have the discretion to deny warranty without dated proof-of-purchase. Any evidence of alteration, erasure, or forgery shall be cause to void any and all warranty terms immediately.
2. MFJ Enterprises, Inc. agrees to repair or replace at MFJ's option without charge to the original owner any defective product provided the product is returned postage prepaid to MFJ Enterprises, Inc. with a personal check, cashiers check, or money order for **\$10.00** covering postage and handling.
3. MFJ Enterprises, Inc. will supply replacement parts free of charge for any MFJ product under warranty upon request. A dated proof of purchase and a **\$8.00** personal check, cashiers check, or money order must be provided to cover postage and handling.
4. This warranty is **NOT** void for owners who attempt to repair defective units. Technical consultation is available by calling (662) 323-5869.
5. This warranty does not apply to kits sold by or manufactured by MFJ Enterprises, Inc.
6. Wired and tested PC board products are covered by this warranty provided **only the wired and tested PC board product is returned**. Wired and tested PC boards installed in the owner's cabinet or connected to switches, jacks, or cables, etc. sent to MFJ Enterprises, Inc. will be returned at the owner's expense unrepaired.
7. Under no circumstances is MFJ Enterprises, Inc. liable for consequential damages to person or property by the use of any MFJ products.
8. **Out-of-Warranty Service:** MFJ Enterprises, Inc. will repair any out-of-warranty product provided the unit is shipped prepaid. All repaired units will be shipped COD to the owner. Repair charges will be added to the COD fee unless other arrangements are made.
9. This warranty is given in lieu of any other warranty expressed or implied.
10. MFJ Enterprises, Inc. reserves the right to make changes or improvements in design or manufacture without incurring any obligation to install such changes upon any of the products previously manufactured.
11. All MFJ products to be serviced in-warranty or out-of-warranty should be addressed to **MFJ Enterprises, Inc., 300 Industrial Park Rd, Starkville, Mississippi 39759, USA** and must be accompanied by a letter describing the problem in detail along with a copy of your dated proof-of-purchase and a telephone number.
12. This warranty gives you specific rights, and you may also have other rights, which vary from state to state.